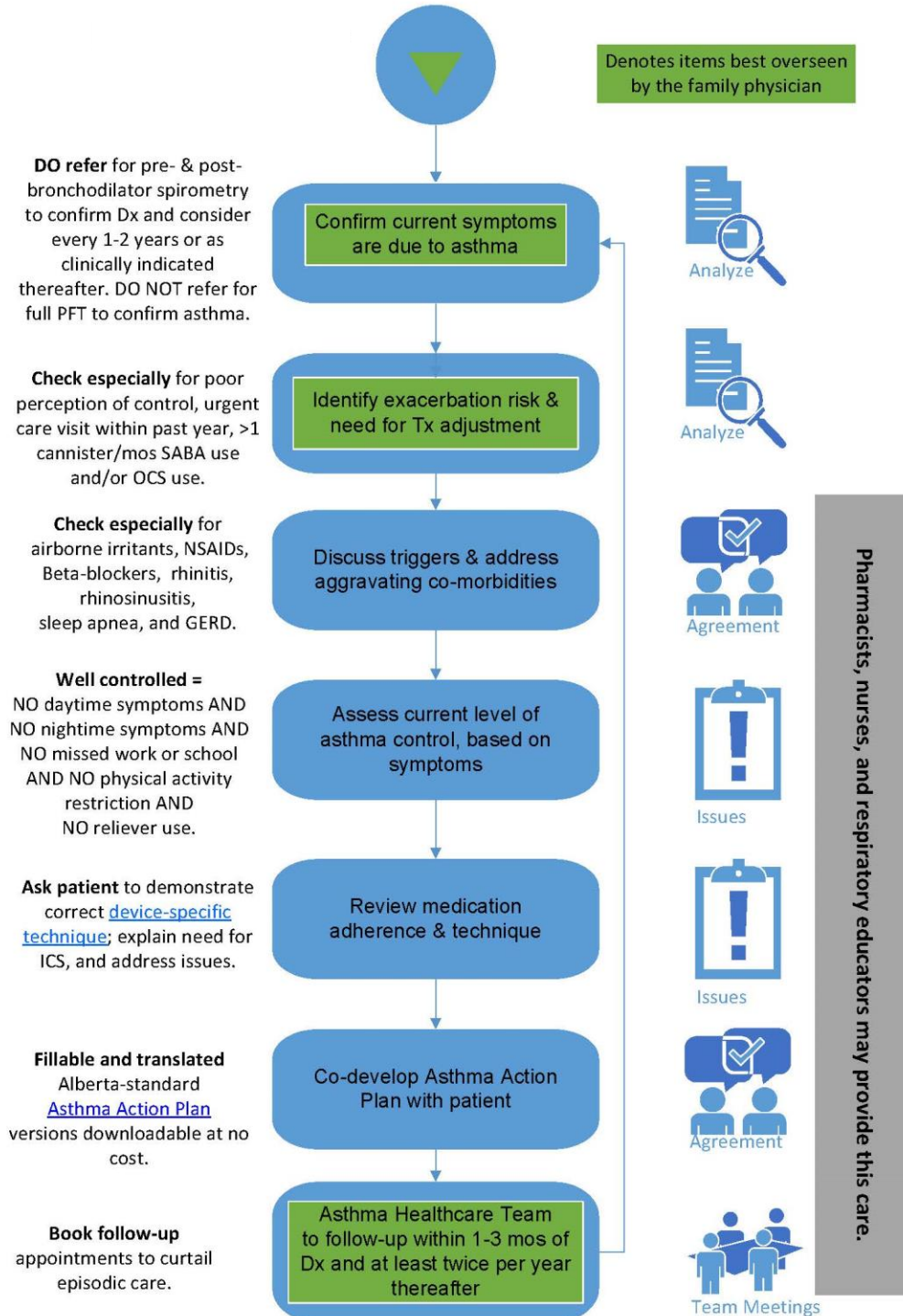


APPROACH TO ASTHMA DIAGNOSIS & EVALUATION AGES 6+



These recommendations are systematically developed statements to assist practitioner and patient decisions about appropriate health care for specific clinical circumstances. They should be used as an adjunct to sound clinical decision making.

For the complete guideline refer to the TOP website: www.topalbertadoctors.org